



▶ SOUTHEAST ASIA AND SUSTAINABILITY—A REPORT ON THE 8TH SEAGA CONFERENCE 1



▶ FOCUS: THE TAN EAN KIAM FOUNDATION, A MAJOR SPONSOR OF THE 8TH SEAGA CONFERENCE ... 3



▶ INTERNATIONAL FORUM 2007: A BRIEF REPORT .. 4

○ ISSUE 1 | ○ JUNE | ○ 2008

SEAGA *focus*

AN E-NEWSLETTER FOR SOUTHEAST ASIAN GEOGRAPHY ASSOCIATION

A report on the 2006 Southeast Asian Geography Association Conference

Sustainability and Southeast Asia

SEAGA, the Southeast Asian Geography Association, celebrated its 16th year as an association of geographers and professionals in related fields like history, the geo and environmental sciences, urban planning and others in academia, education, government and the private sector in the region, in 2006.

The Conference was held in the Nanyang Girls High School, Singapore from 28 to 30 November. It was also the 8th conference organised since the association was established in 1990.

Sustainability and Southeast

Asia was the conference theme and we had 11 keynote and plenary addresses, 14 specialist panel session comprising 52 papers and 78 open session papers presenting multidimensional perspectives of sustainability from scholars, policy makers and entrepreneurs as well as researchers and teachers. There were in all 141 papers and presentations over three days of the conference which were attended by more than 300 academics, social activists, teachers and students from over 23 countries in Asia and beyond.

(Continued on page 2)



Contact Information

Email: seaga@nie.edu.sg
Website: <http://www.seaga.co.nr>



SEAGA

Southeast Asian Geography Association

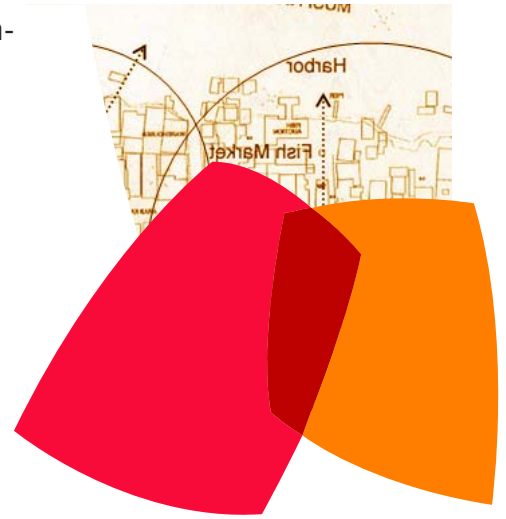
(Continued from page 1)

Arising from the papers presented at this conference were two journal special issues and a book project. There is a special issue on Natural Hazards in Southeast Asia in the Journal, Natural Hazards and a special issue on Geographic Education in Southeast Asia in the Journal, International Research in Geographical and Environmental Education. A book project on

heritage and culture in South-east Asia is also being published at the moment. More news will be announced on the website at

<http://www.seaga.co.nr>

Reported by
Chang Chew Hung
Secretary SEAGA Ex-Co



ANNOUNCING ...

Transformations and Embodiments in Southeast Asian Geographies:

Changing Environments, People and Cultural Groups, Institutions and Landscapes

SEAMEO INNOTECH,
Quezon City, Philippines
3-6 June 2008

Natural cycles, environmental fluctuations and human activities, which are intricately woven around economic, cultural, environmental and political concerns, have always characterized the trajectories of transformations of the world that we live in. In the midst of intertwined and globalizing economic and political processes, the present and future conditions of their natural environments and social, cultural and political landscapes change. These corresponding and resulting human conditions are widely observable in Southeast Asia. They are intricately embodied in the daily experiences of the indigenous peoples, rice paddy farmers, sidewalk vendors, housewives, schoolchildren, entrepreneurs and young urban professionals of Southeast Asia. They define the order, stability and direction of the evolving economic processes, political struggles, cultural expressions and social relationships that may have local, regional and global significance and repercussions. Meanwhile, it remains that the processes and changes have unequal impacts among human societies and environmental systems in different parts of the world. Nevertheless, as members of humanity, we will altogether suffer the consequences of these local, regional and global transformations in the very near future.

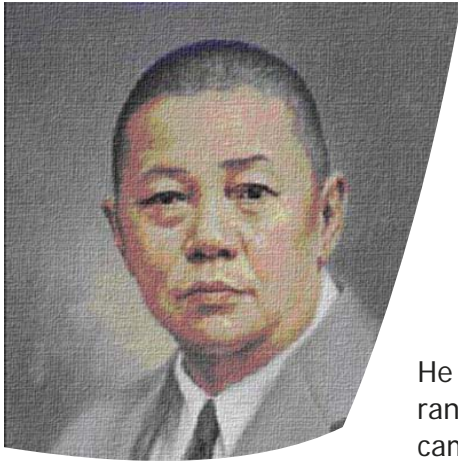
(Summarised from website: <http://seaga2008.googlepages.com/>)

Doracie B. Zoleta-Nantes, PhD
Chairperson, Organising Committee
President, Philippine Geographical Society

Organised by:



SEAGA
Southeast Asian Geography Association



His Early Life

The late Mr Tan Ean Kiam was born in Fukien province, Tong Ann district, in China. He came to Singapore in 1899, and worked as a labourer. He carted water from the public taps to the premises in the central business district for a fee. At the age of 17, he worked as an apprentice for Mr Tan Kah Kee's father who was a merchant dealing in rubber. As an apprentice, he did odd jobs and learnt various trades. After several years of apprenticeship, he set up his own businesses and incorporated companies, named Joo Guan Ltd and Ean Lian Ltd in 1937.

His Career Life

Mr Tan was a merchant who had been a leading member of the circle of businessmen which founded the Oversea Chinese Bank (OCB) in 1919.

He rose through the rank and file and became OCB's first manager and then managing director.

In 1932, he was the chief decision-maker and was subsequently appointed as one of the first joint manager-directors of the Overseas Chinese Banking Corporation (OCBC). He served in OCBC from 1932 to 1943.

His Social Contributions

Mr Tan was ever mindful of his responsibility towards the larger society.

During his lifetime, he donated to numerous charitable and education institutions. He left money to continue these welfare projects through the Tan Ean Kiam Foundation (which was incorporated in 1956). He had great passion to foster education of all kinds to breed

A SEAGA tribute to

TAN EAN KIAM FOUNDATION AND THE FOUNDER, LATE TAN EAN KIAM

The Life Story and Legacy of the late Mr. Tan Ean Kiam (1881 – 1943)

leaders and relieve human sufferings.

In 1937, Mr Tan, together with five others of his contemporaries, known as the Pioneers of Singa-

pore, pooled their resources to acquire the villa so that the father of the Chinese Republic, Dr Sun Yat Sen could stay while he was in Singapore. The villa is now known as the "Sun Yat Sen Villa", an important monument in memory of Dr Sun.

During the period of the Japanese invasion and serving alongside Mr Tan Kah Kee, Mr Tan Ean Kiam was the Deputy Chairman of the China Relief Organization and made invaluable contributions to the relief work in China. Mr Tan also spearheaded many social service activities in the country. For his active leadership

(Continued on page 4)

... WAS EVER MINDFUL OF HIS RESPONSIBILITY TOWARDS THE LARGER SOCIETY. DURING HIS LIFETIME, HE DONATED TO NUMEROUS CHARITABLE AND EDUCATION INSTITUTIONS...

SEAGA 2006:

A tribute to our sponsor...



International Forum 2007

Organised in response to popular demand by key members of the SEAGA network, this forum celebrates our 17th year and commemorates ASEAN's 40th year. In its continuing mission to provide a platform for researchers on any aspect of South-east Asia, from within or outside the region to share their research and work in geography, the humanities, social sciences and related areas. The programme of the forum included the discussion of themes ranging from urban, environmental, economic, cultural and education futures within the region. These issues are not only relevant to scholars and policy makers alike and we had as many as 150 teachers, educators, professionals and practitioners debating our future as a region and a people on 28 July 2007 at the National Library Building in Singapore.



Reported by
Chang Chew Hung
Secretary SEAGA Ex-Co

(Continued from page 3)

in the China Relief Organization, Mr Tan was imprisoned and maltreated during the Japanese Occupation of Singapore and eventually died of a heart attack in 1943.

Tan Ean Kiam Foundation

Tan Ean Kiam Foundation was incorporated on 16th January 1956 by his sons, as per our founder's wishes requested in his will, to continue his passion to help the needy and society in general.

Our former chairman, Tan Tock San (son of the founder, who passed away on 30th January 2008) had continued our founder's motto by contributing to the society by donating towards charities, especially for education, health and to preserve sites with historical significance.

All these years, our Foundation has been donating to schools, needy charities, like Kidney Dialysis Foundation, Singapore Thong Chai Medical Institution, Singapore Children's Society, Singapore Heart Foundation, Singapore Cancer Society, Apex Harmony Lodge, Home Nursing Foundation, Buddhist Compassion Relief Tzu-Chi Foundation and many deserved needy.

Our current chairman, Tan Keng Soon (grandson of the founder), has aggressively stepped up donations to fulfill our founder's wishes and passion. He has strong preference to donate to mostly schools, helping to breed future leaders for our country.

Written by Mr Homer Tan

We would like to acknowledge that Tan Ean Kiam foundation made a donation to SEAGA in 2006 for the organization of conferences and fora.



JOB OPPORTUNITY

The Humanities and Social Studies Education Academic Group (HSSE) of the National Institute of Education, Singapore, is inviting qualified academics who possess a PhD, with a proven record of accomplishment in teaching and research at university level, to apply for a faculty position at **Assistant Professor** level to teach Geography in the areas of Geographical Information Systems (GIS) and Remote Sensing, as well as one of the following fields in Physical Geography :

- Climatology
- Geomorphology
- Hydrology
- Biogeography

Applicants are expected to teach at both the undergraduate and graduate levels in English, as well as supervise student teachers in teaching practice. More information can be found at <http://www.hsse.nie.edu.sg/>

SEAGA
focus

Editors:
Prof Ooi Giok Ling—NIE/NTU
As/Prof Chang Chew Hung—NIE/NTU